



**1 Bed
Apartment
located in Greenwich**



Harbour Walk Peninsula
Square
Greenwich
London
SE10 0SQ



£2,100

BRAND NEW! Modern Studio Apartment in Greenwich Peninsula

Discover your dream home in the heart of Greenwich Peninsula! This brand-new one-bedroom property offers contemporary living in one of London's most vibrant and sought-after locations.

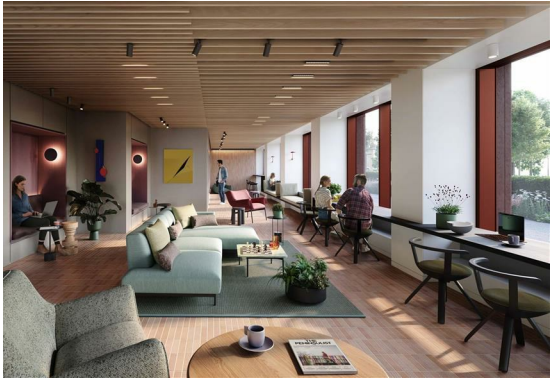
Stylish Open-Plan living area with floor-to-ceiling windows, allowing plenty of natural light. Fully modern kitchen fitted with high-end appliances, sleek finishes, and ample storage. the living space leads out onto the private balcony which is perfect for relaxing or entertaining, offering stunning views of the area.


Comfortable Bedroom with a pleasant finish with built-in wardrobes and a tranquil ambience. Luxury Bathroom with high spec finish and a high standard of modern fixtures and fittings.

Amenities: Access to a 24-hour concierge, gym, and communal gardens.

Prime Location: A short walk to the O2 Arena, local shops, cafes, and the Thames. Excellent transport links via North Greenwich Station (Jubilee Line), Emirates Cable Car, and Thames Clipper. This property combines modern design with a vibrant community setting. Don't miss your chance to live in this exciting new development.

(CGI photos have been used)



Energy Efficiency Rating		
	Current	Potential
Very energy efficient - lower running costs		
(92 plus) A		
(81-91) B		
(69-80) C		
(55-68) D		
(39-54) E		
(21-38) F		
(1-20) G		
Not energy efficient - higher running costs		
England & Wales	EU Directive 2002/91/EC 	

DIRECTIONS

CONTACT

Meridian House 42 Upper Berkeley Street
London
W1 5PW

E: info@kareestates.co.uk

T: 7831847551

kareestates.co.uk

